

# TIMBERLAKE RANCH, UNIT 8

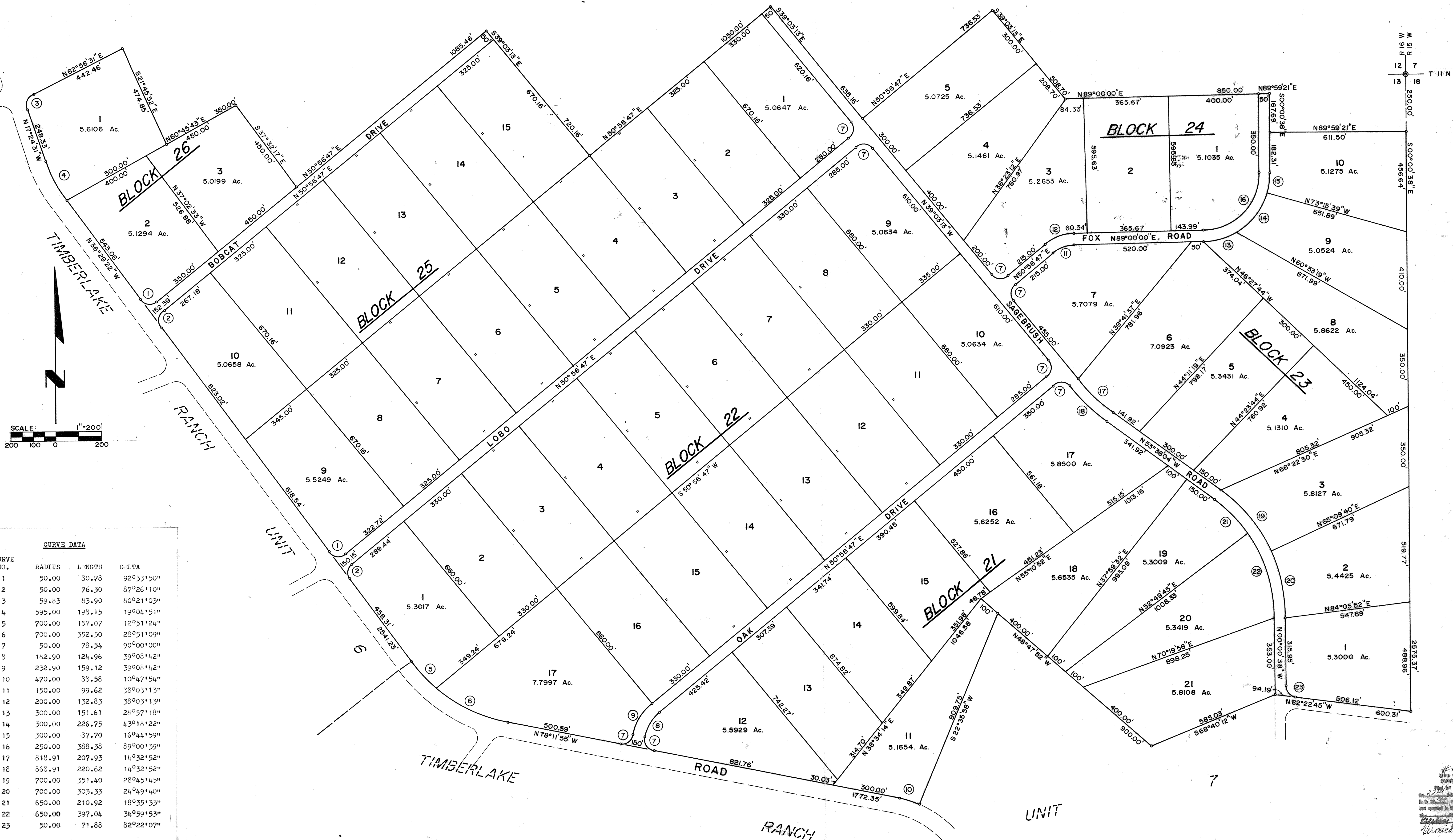
A SUBDIVISION IN

SECTIONS 12, 13 & 14 T 11 N, R 16 W, N.M.P.M.

McKINLEY COUNTY, NEW MEXICO

NOVEMBER 1978

OFFICE OF THE  
COUNTY CLERK  
Aug 22 3 35 PM '79  
McKINLEY COUNTY



### CURVE DATA

CURVE NO.	RADIUS	LENGTH	DELTA
1	50.00	80.78	92°33'50"
2	50.00	76.30	87°26'10"
3	59.33	83.90	80°21'03"
4	595.00	198.15	19°04'51"
5	700.00	157.07	12°51'24"
6	700.00	352.50	28°51'09"
7	50.00	78.54	90°00'00"
8	182.90	124.96	39°08'42"
9	232.90	159.12	39°08'42"
10	470.00	88.58	10°47'54"
11	150.00	99.62	38°03'13"
12	200.00	132.83	38°03'13"
13	300.00	151.61	28°57'18"
14	300.00	226.75	43°18'22"
15	300.00	87.70	16°44'59"
16	250.00	388.38	89°00'39"
17	818.91	207.93	14°32'52"
18	868.91	220.62	14°32'52"
19	700.00	351.40	28°45'45"
20	700.00	303.33	24°49'40"
21	650.00	210.92	18°35'33"
22	650.00	397.04	34°59'53"
23	50.00	71.88	82°22'07"

### COUNTY CLERK'S CERTIFICATE

I, Christie J. Long, County Clerk and ex-officio recorder of McKinley County, New Mexico, do hereby certify that the plat contained hereon was duly filed in my office as provided by law on the 22nd day of August, 1979.

Christie J. Long  
Clerk and ex-officio recorder  
McKinley County, New Mexico

### NOTES:

- Bearings were established by solar observation.
- Property corners are monumented with half inch iron stakes.
- An easement for utilities ten feet in width is reserved from each lot lying along each property line including road frontage.
- All road rights of way are 50 feet in width except as noted.
- All lots are 5.0000 Acres in size except as noted.
- All side lot lines are perpendicular to the front lot lines except as indicated by a bearing and distance.

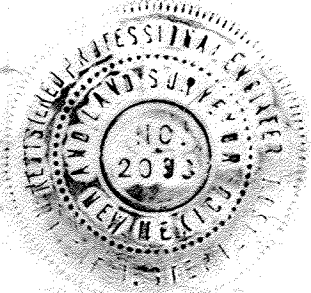
Approved for Utilities: Fred C. Taylor 8-6-79  
Continental Divide Electric Coop. Date

Approved: Charles Hill 7/9/79  
McKinley County Planning Commission Date

Approved: Shelby Salcedo 7-15-79  
McKinley County Commission Date

I certify that I am responsible for this survey and that this final plat accurately depicts the subdivision and survey.

Robert B. Stephenson  
Robert B. Stephenson  
N.M.L.S. No. 2093



### DEDICATION

This subdivision, situate within Section 13, and the S½SE¼, and the S½SW¼, of Section 12, and the E½NW¼ of Section 14, and the E½SE¼ of Section 11, T 11 N, R 16 W, N.M.P.M., McKinley County, New Mexico, as more particularly described by metes and bounds as shown hereon, is with the free consent and in accordance with the desires of the undersigned owner(s) and proprietor(s) thereof.

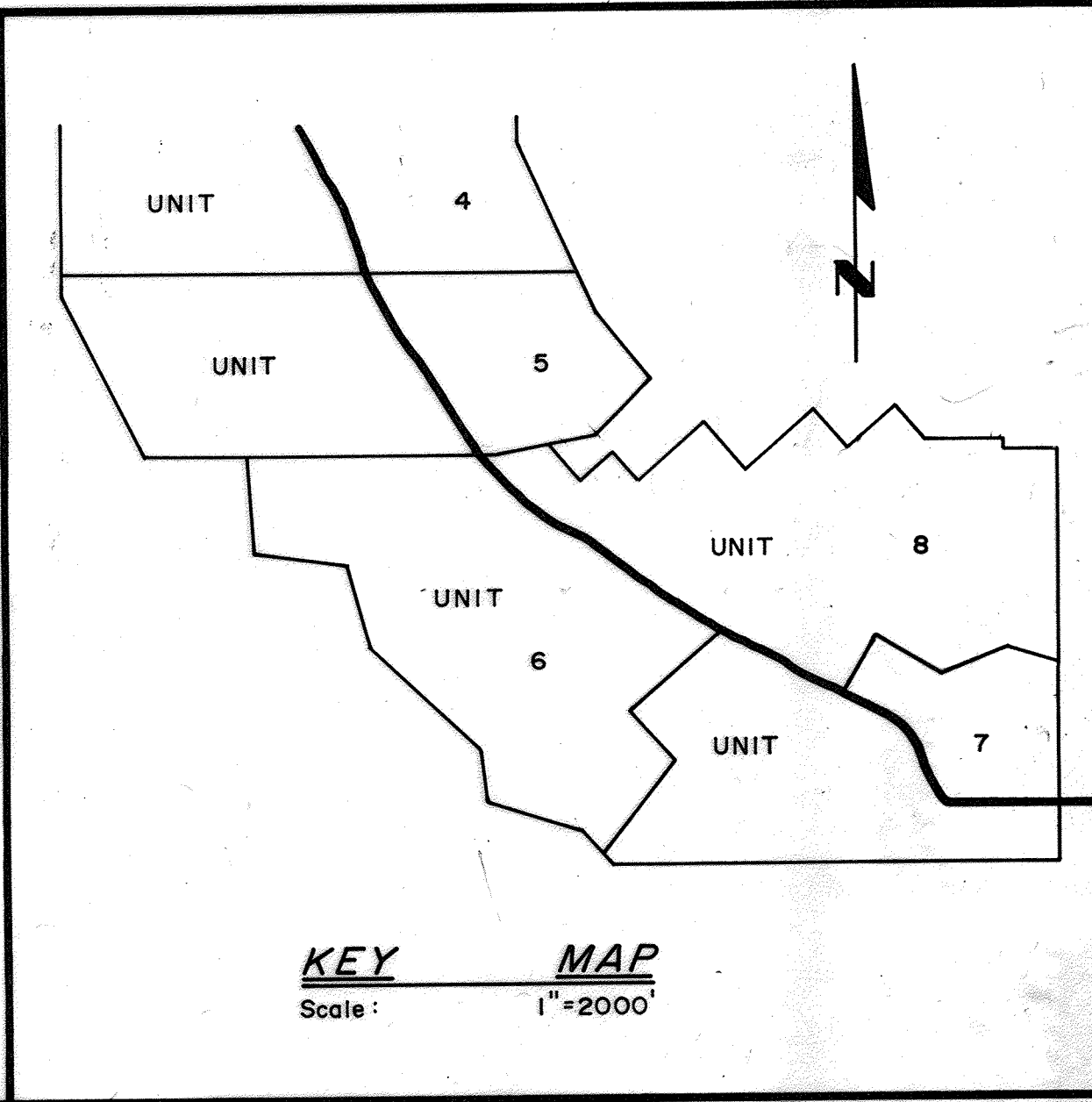
### RAMAH LAKE VENTURE

By Maria Sanchez  
By \_\_\_\_\_

State of New Mexico )  
County of McKinley )

The foregoing instrument was acknowledged before me this 22nd day of Aug, 1979, by Maria Sanchez and \_\_\_\_\_, partners in the RAMAH LAKE VENTURE, on behalf of said partnership.

My commission expires 3-11-80 Stephenson  
Notary Public



#190,944  
GIVEN BY THIS INSTRUMENT  
COUNTY OF GUNTER  
FILED FOR RECORD BY THE COUNTY CLERK  
ON THE 22ND DAY OF AUGUST 1979  
AT GUNTER, TEXAS  
Wanda