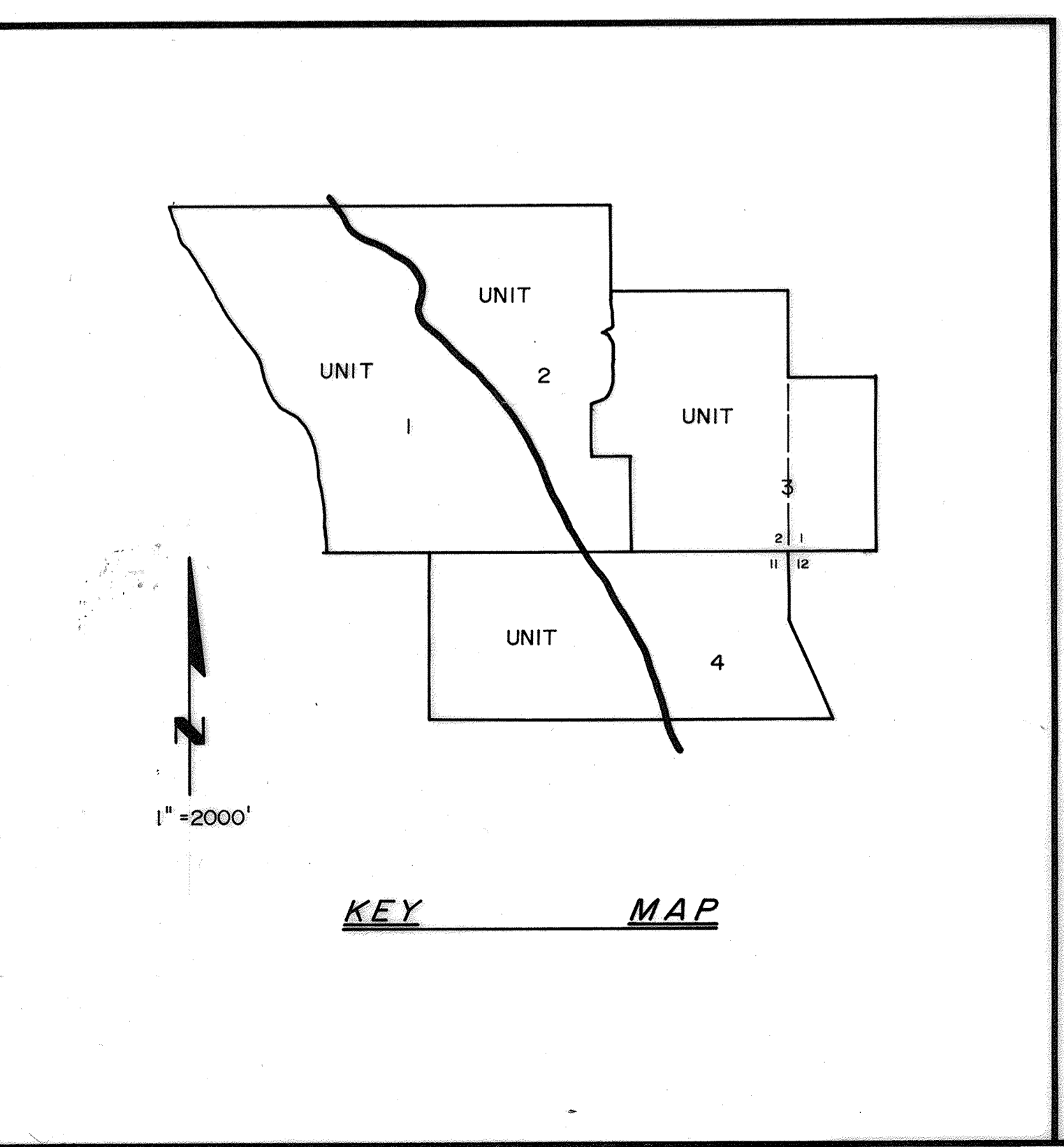
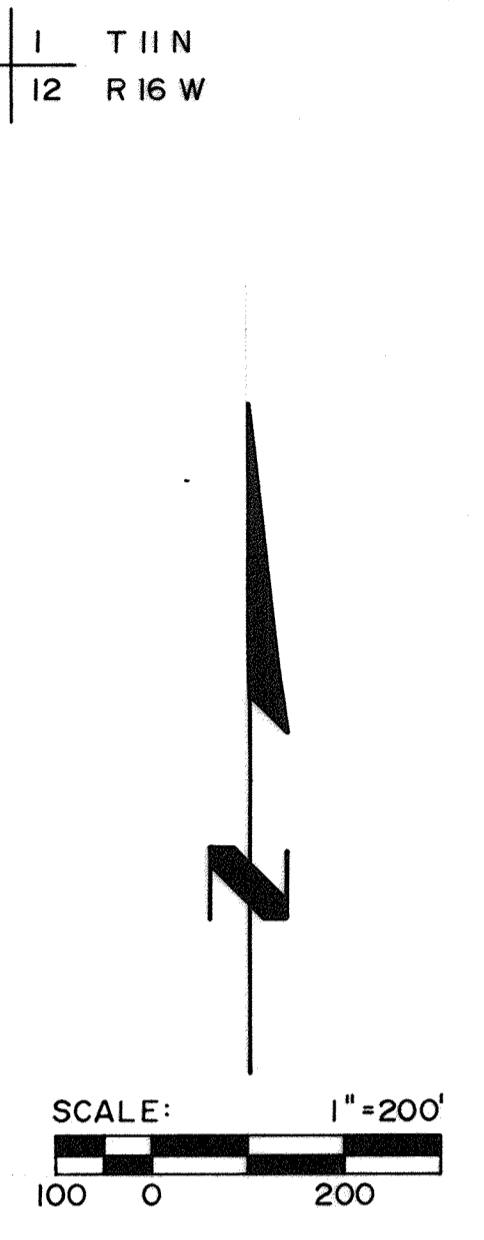
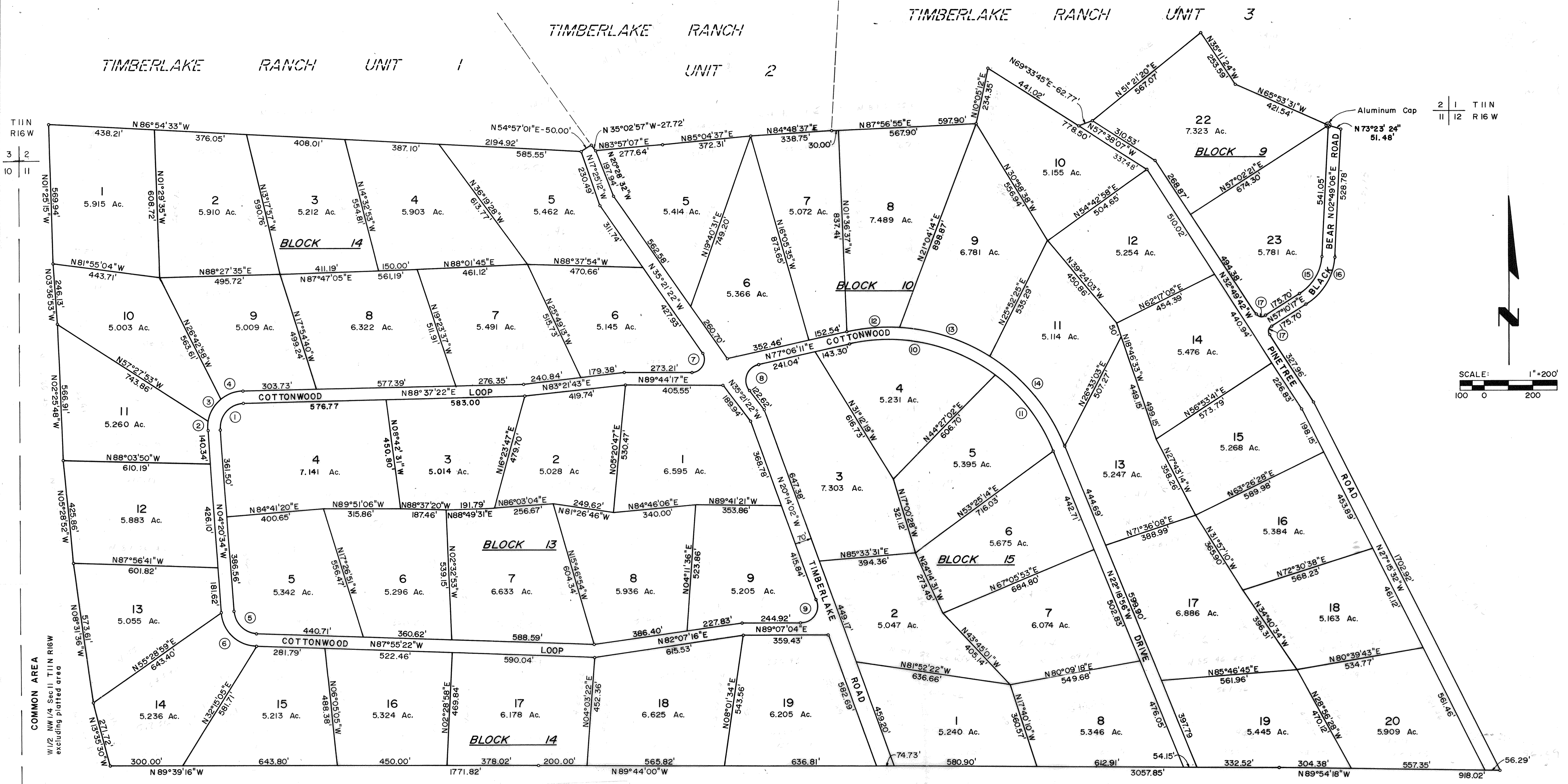


OFFICE OF THE
COUNTY CLERK
Aug 22 3 31 PM '79
McKINLEY COUNTY

TIMBERLAKE RANCH, UNIT 4
A SUBDIVISION IN
SECTIONS 2, 11 & 12, T 11 N, R 16 W, N.M.P.M.
McKINLEY COUNTY, NEW MEXICO
JULY, 1978



COUNTY CLERK'S CERTIFICATE
I, Christine J. Sample, County Clerk and ex-officio recorder of McKinley County, New Mexico, do hereby certify that the plat contained hereon was duly filed in my office as provided by law on the 22nd day of August, 1979.
Christine J. Sample
Clerk and ex-officio recorder
McKinley County, New Mexico

CURVE DATA

Curve No.	Radius	Length	Delta
1	100.00	162.26	92° 57' 58"
2	150.00	47.37	18° 05' 32"
3	150.00	95.89	36° 37' 41"
4	150.00	100.13	38° 14' 44"
5	100.00	145.87	83° 34' 48"
6	150.00	218.81	83° 34' 48"
7	51.95	113.42	125° 05' 40"
8	66.87	131.25	112° 27' 34"
9	70.87	135.26	109° 21' 06"
10	739.15	637.34	49° 24' 13"
11	739.15	402.21	31° 10' 39"
12	789.15	222.36	16° 08' 39"
13	789.15	399.26	28° 59' 16"
14	789.15	488.25	35° 26' 57"
15	194.78	184.78	54° 21' 11"
16	244.78	232.21	54° 21' 11"
17	25.00	39.27	90° 00' 00"

Approved For Utilities: Fred G. Jolley 8-6-79
Continental Divide Electric Coop.
APPROVED: Charles High 7/13/79
McKinley County Planning Commission Date
Wendy Peltola 7-18-79
McKinley County Commission Date

I certify that I am responsible for this survey and that this final plat accurately depicts the subdivision and survey.
Robert B. Stephenson
Robert B. Stephenson
N.M.L.S. No. 2093

- NOTES:
- Bearings were determined by solar observation.
 - Property corners are monumented with half inch iron stakes.
 - An easement for utilities ten feet in width is reserved from each lot lying along each property line including road frontage.

DEDICATION
This subdivision, situate within the south half of the south half of Section 2, and the west half of the west half of Section 12, and section 11, T 11 N, R 16 W, N.M.P.M., McKinley County, New Mexico, as more particularly described by notes and bounds as shown hereon, is with the free consent and in accordance with the desire of the undersigned owner(s) and proprietor(s) thereof.

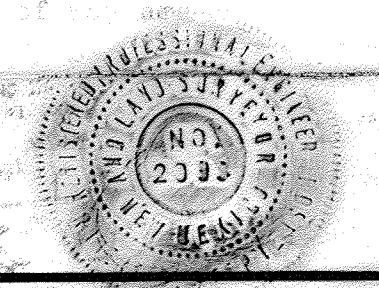
RANAH LAKE VENTURE
By Mavis Searcy
By _____

State of New Mexico) SS
County of McKinley)

The foregoing instrument was acknowledged before me this 22nd day of July, 1979 by Mavis Searcy and _____

partners in the Ranah Lake Venture, on behalf of said partnership.

My commission expires 3-16-80
John J. Garcia
Notary Public



100,940 #
County of McKinley)
City of _____)
I, _____
do hereby certify that
this instrument was
duly filed in my
office on the _____
day of _____, 1979.